



# Stair & Railing 2025

From Inspiration to Installation.



**SOUTHERN**  
staircase™

[SOUTHERNSTAIRCASE.COM](https://southernstaircase.com)



LET'S BUILD SOMETHING  
LASTING TOGETHER



# THE SOUTHERN STAIRCASE DIFFERENCE

*We're not just a builder.*

*We're a partner.*

At Southern Staircase, we don't just copy and paste design and installation from project to project. Instead, we start with the vision, take precise measurements, examine the flow of space, and deliver the exact stair and railing you desire.

From inspiration to installation, we'll guide you through design options, material pairing, code compliance, and so much more. Our team keeps our finger on the pulse of the latest trends and can collaborate with you to ensure your vision comes to life.





# TABLE OF CONTENTS

## Inspiration

Modern	6
Classic	7
Coastal	8

## Curated Modern Selections

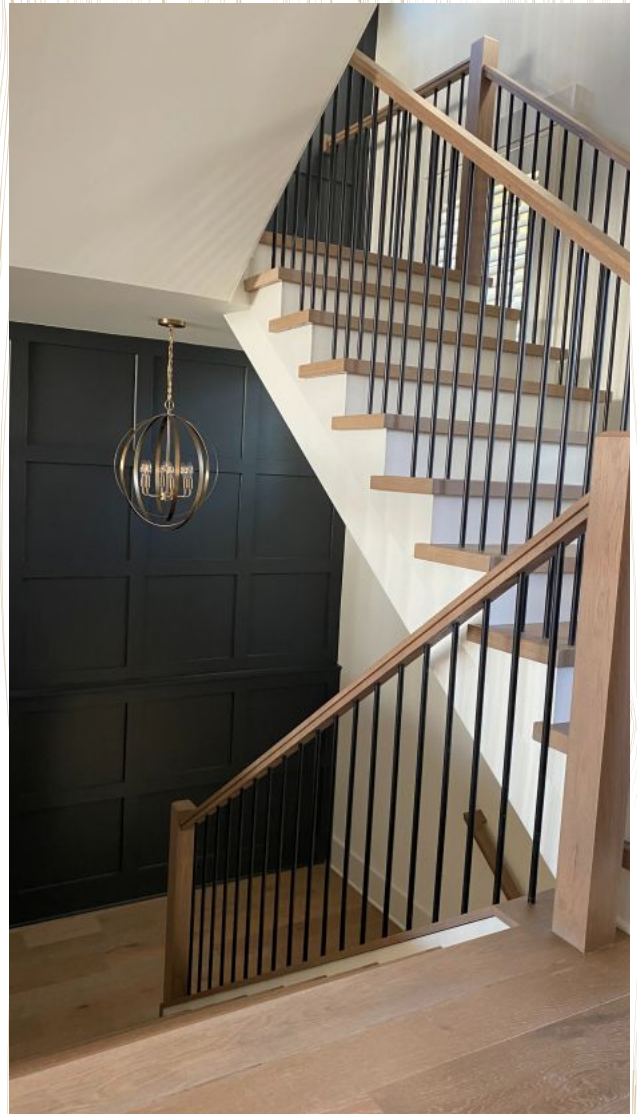
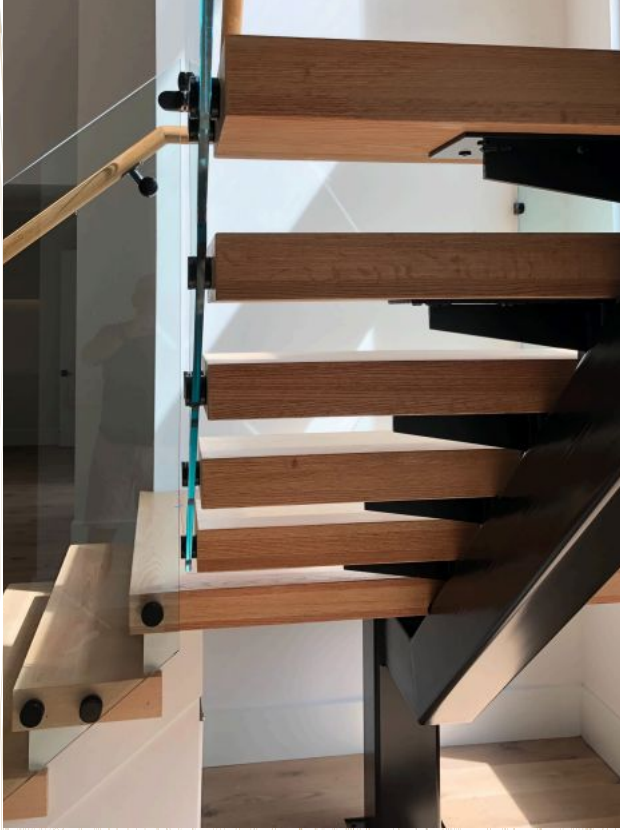
Elemental	10
Elevation	11
Contemporary	12

## Preferred & Stocked Stair Parts

Wood Newels & Balusters	15
Metal Newels & Balusters	18
Preferred Handrails	23
Fittings	25
Treads	27

## Specialty Products

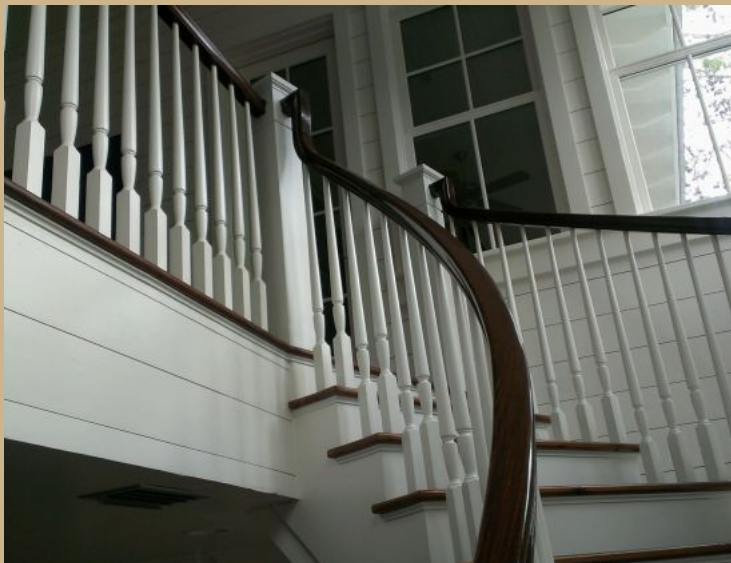
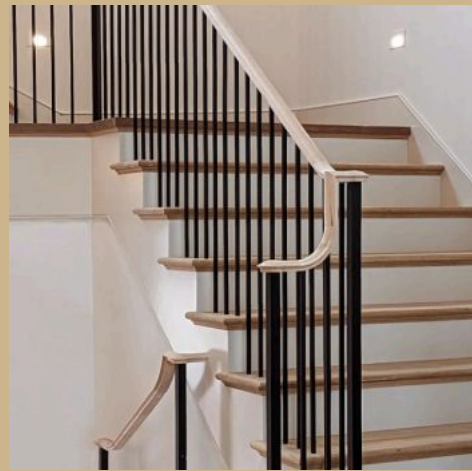
Glass	30
Stainless Steel	31
Cable	32
Horizontal Bar	33
Ornamental Metal	34



# Modern

That Inspires





**Classic**  
Never Goes Out of Style

# Going Coastal





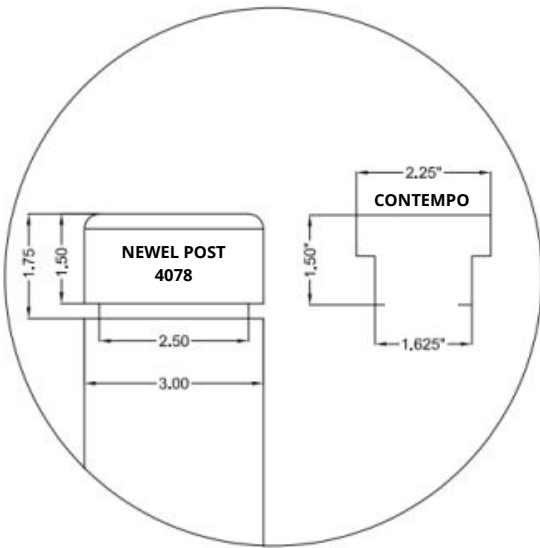
**CURATED  
MODERN  
SELECTIONS**

STAIRS FOR MODERN HOMES

# Elemental

---

Instill a modern elegance to the home with stairs that are crafted for beauty and durability.



Rail: Contempo (No Fittings)

Balusters: Round Metal (1/2" STB)

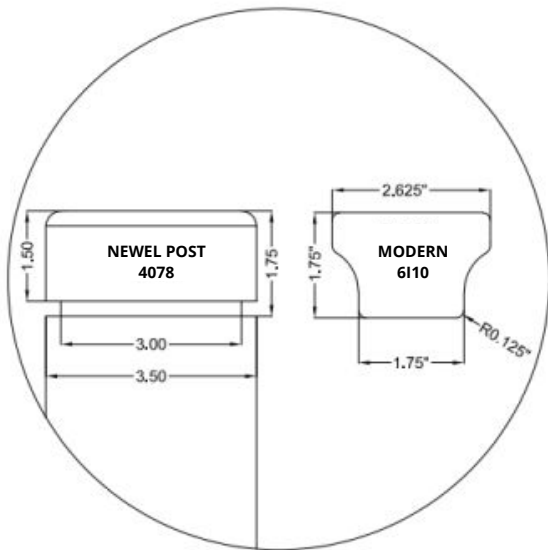
Newel: Contempo (3" x 48")



# Elevation

---

Take your stairs to the next level with an accented design that bestows a modern sophistication.



Rail: Modern (Fittings Available)

Balusters: Bar with Accent (1/2" STB)

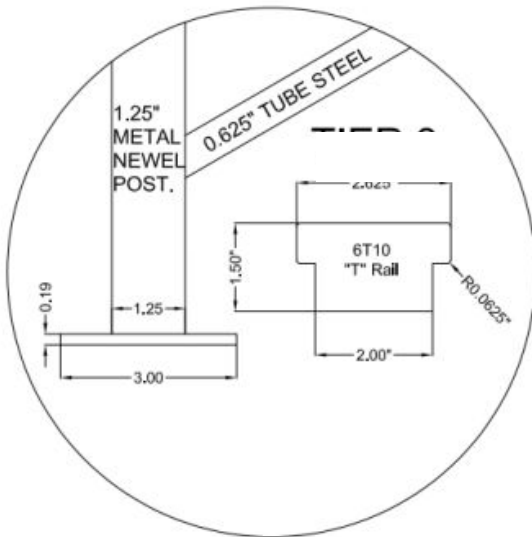
Newel: Modern Wood (3 1/2") /Metal



# Contemporary

---

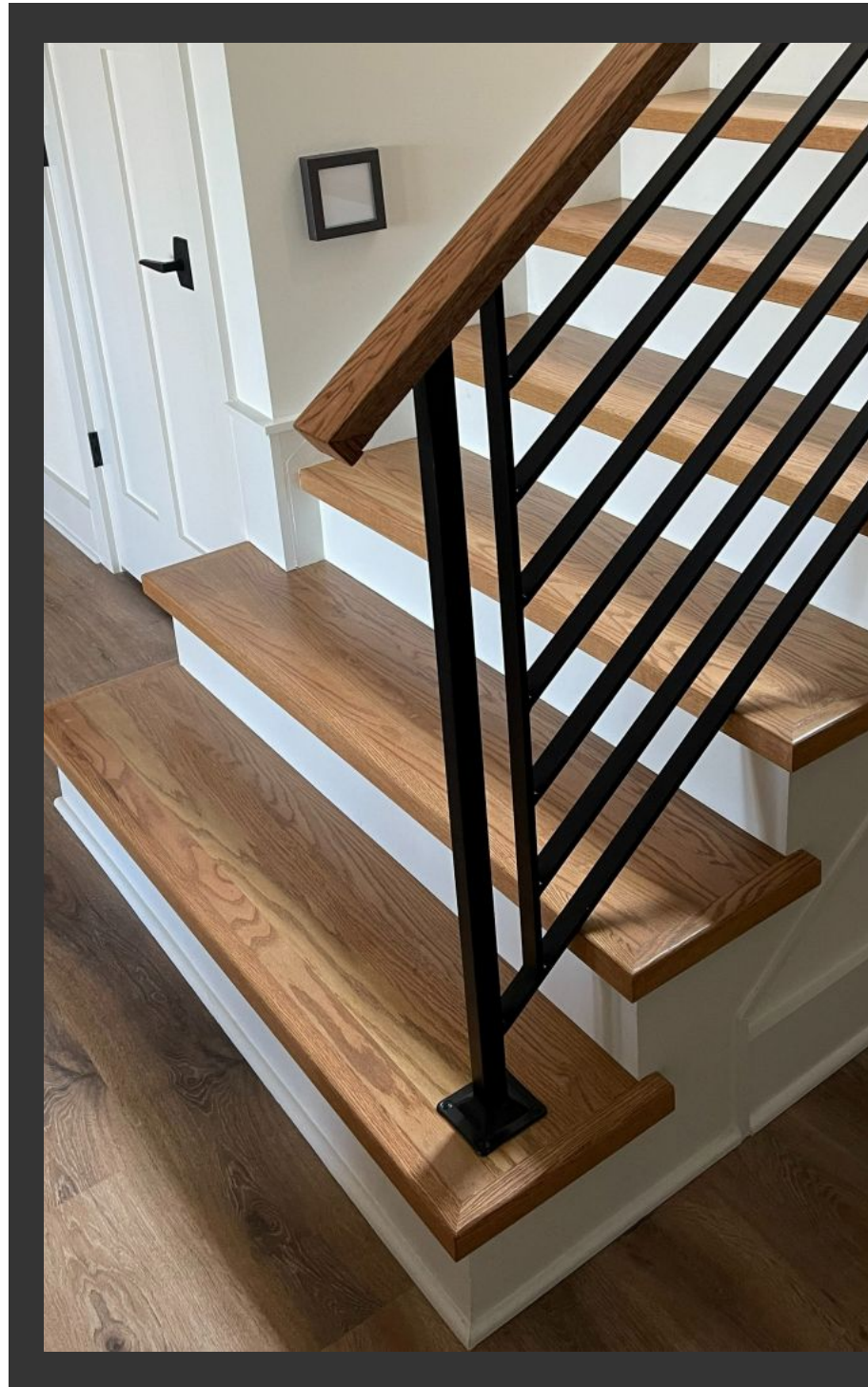
The Contemporary selection is a modern approach that brings a custom and polished finish to the home.



Rail: Modern

Balusters: Horizontal

Newel: Modern Wood /Metal



**READY TO DESIGN YOUR STAIR?  
LET'S GET STARTED.**



## Preferred & Stocked Stair Parts

# POPULAR WOOD NEWELS & BALUSTERS



4100  
3 1/2" Base



4153  
5" Base



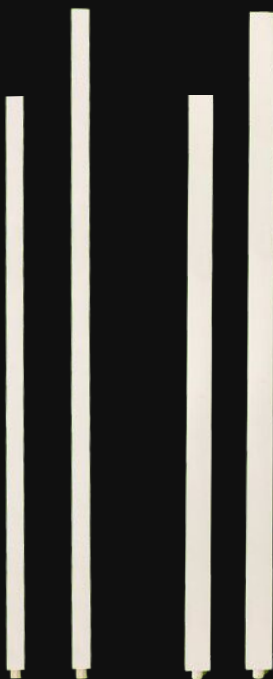
4160  
6 1/4" Base



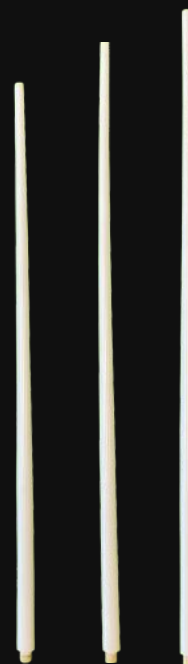
4077  
3" Base



4078  
3 1/2" Base



5602A/5603A  
Primed Wood Squares  
1 1/4" or 1 3/4" Square  
Length: 36" or 43"



5026A  
Primed Wood Tapers  
1 1/8" Base Diameter  
Length: 36", 39" or 41"

## COLONIAL



4040



4010

Newel: 3"  
Base: Square



5015A

Primed Balusters  
1 1/4" Square and 3/4" Trimmable Top  
Length: 36", 39" or 43"

## CHARLESTON



4C40



4C10

Newel: 3 1/2"  
Base: Square  
Fluted or Twisted Made to Order



5C15A

Primed Balusters  
1 3/4" Square  
Length: 36", 39", 41", 43" or 36", 42" LB

# REGENCY



4R40

4R10

Newel: 3 1/2"  
Base: Square  
Fluted Made to Order



5R45

Primed Regency Balusters  
1 3/4" Square  
Length: 35", 37", 39", 41", 41" LB or 43"

# HAMPTON



4H00

4H40

4H10

Newel: 3 1/2"  
Base: Square

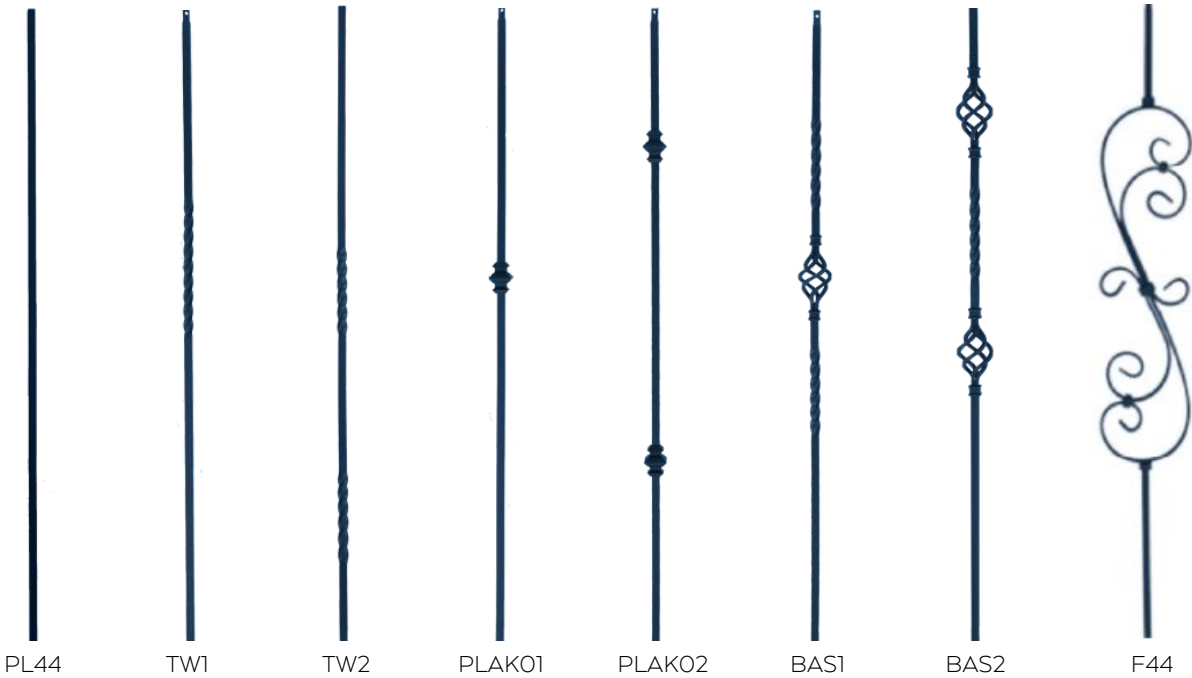


5H05/5H45

Primed Hampton Balusters  
1 3/4" Square  
Length: 34", 36", 39", 42", or 43"

# SOUGHT AFTER METAL NEWELS & BALUSTERS

Texture: Smooth  
Baluster: 1/2" Square Tubular  
Readily Available



Texture: Smooth  
Newel: 1" Square Solid



45-NPL

Texture: Smooth  
Baluster: Bar with Accent  
1/2" Square Tubular



T81

Texture: Smooth  
Baluster: Round Bar  
1/2" Diameter



TRO

## Round, Forged Newels and Balusters

Create an Old World look with hand hammered round newels and balusters.



Ends: 1" Round  
Solid  
1.1.22



Ends: 1" Round  
Solid  
1.1.21



Ends: 9/16" Round  
Solid  
2.9.21



Ends: 9/16" Round  
Solid  
2.10.2



Ends: 9/16" Round  
Solid  
2.10.3

## Square, Forged Newel and Balusters

Enhance a traditional stair with hand forged and hammered newels and balusters.



Ends: 1" Square  
Tubular  
1.1.14-T



Ends: 9/16" Square.  
Solid or Tubular  
2.9.20 (-T)



Ends: 9/16" Square  
Solid  
2.9.12



Ends: 9/16" Square  
Solid  
2.9.13



Ends: 9/16" Square  
Solid or Tubular  
2.9.28 (-T)



Ends: 9/16" Square  
Solid or Tubular  
2.9.26 (-T)

## Modern Newel and Balusters

Complement your modern stair system with balusters that offer clean lines and open detail.



Plain Square Bar Iron Newel  
Ends: 1-3/16" Square  
Solid or Tubular  
16.5.8 (-T)



Double Bar Hollow  
Ends: 1/2" Square  
Tubular  
16.6.1



Single Oval Hollow  
Ends: 1/2" Square  
Tubular  
16.6.2



Marquis Modern  
Ends: 1/2" Square  
Tubular  
16.6.7



Arch  
Ends: 1/2" Square  
Tubular  
16.6.10



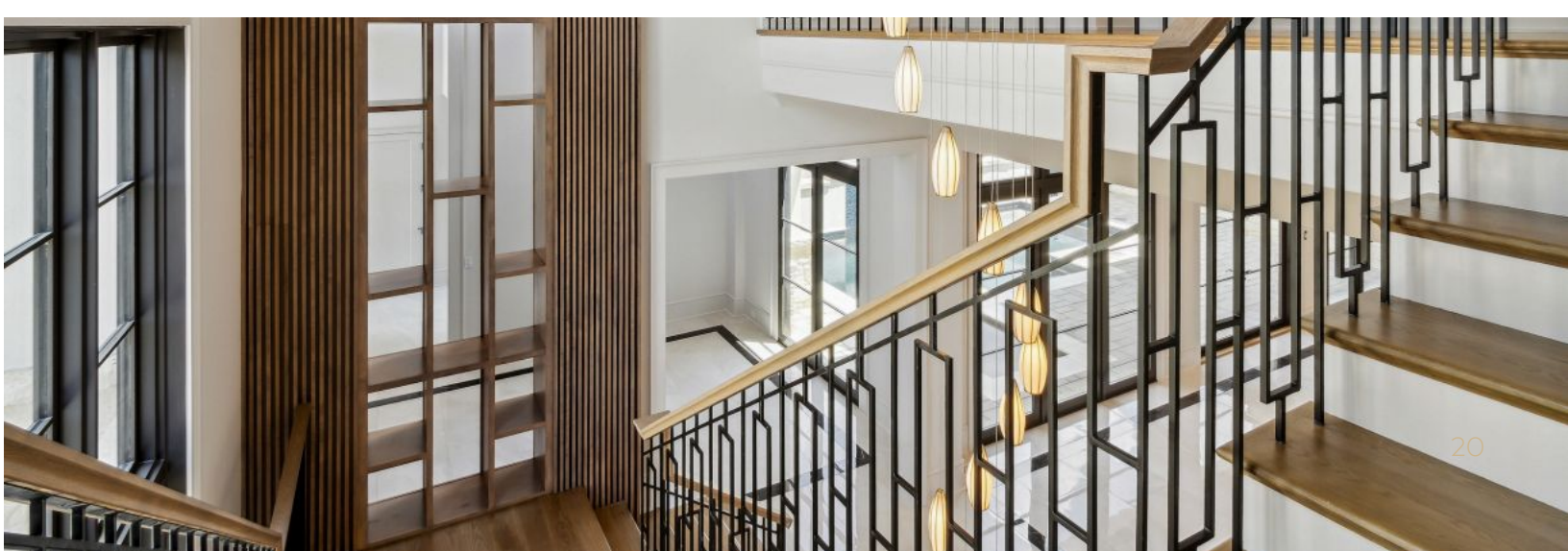
Crossed Arch  
Ends: 1/2" Square  
Tubular  
16.6.11



Curved Hexagon  
Ends: 1/2" Square  
Tubular  
16.6.12



Scalloped Rectangle  
Ends: 1/2" Square  
Tubular  
16.6.13



## Gothic Balusters

Embellish your stair system with ornate details inspired by Gothic design.



Plain Iron  
14344



Single Basket  
with Spoons Iron  
16044



Double Knuckle  
with Spoons Iron  
15044



Single Knuckle  
with Spoons Iron  
14044

## Large Format Balusters

Provide strength and size to your overall stair system with our Large Format Balusters.



Plain Bar  
M-PLA44



Single Knuckle  
M-1KNUC44



Single Twist  
M-1TW44

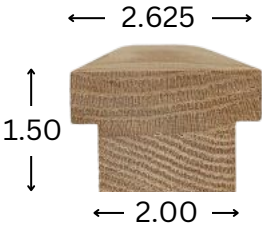


Single Basket  
M-1BASK44

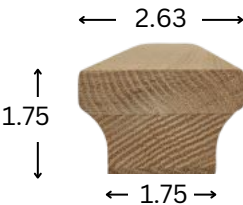


# PREFERRED HANDRAILS

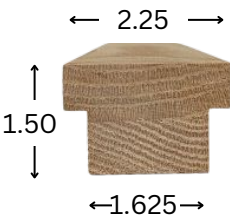
6T10  
T-Rail  
\*Fittings not available  
IRC Compliant



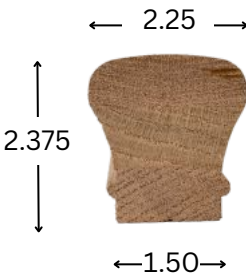
6I10  
Modern  
IRC Compliant



6C10  
ConTempo  
\*Fittings not available  
IRC Compliant



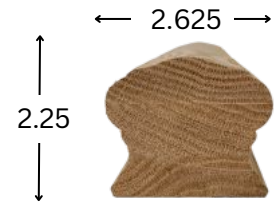
6O10  
Colonial  
IRC Compliant



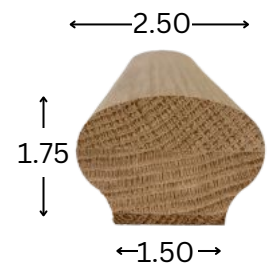
6210  
Classic  
IRC Compliant



6W10  
Windsor  
IRC Compliant



6M10  
Monaco  
IRC Compliant



# FITTINGS



09

Returned End



10

Starting Easing



11

Level Quarter Turn  
No Cap



12

Standard Up  
Easing



13

Over Hand  
Easing



14

90° Up Easing



19

Opening Cap



20

Tandem Cap



21

Level Quarter Turn  
with Cap



30

Left Hand Volute



35

Right Hand Volute



40

Left Hand Turnout



45

Right Hand Turnout



60

2 Rise Left Hand  
Platform Gooseneck  
with Cap



65

2 Rise Right Hand  
Platform Gooseneck  
with Cap



71

2 Rise Left Hand  
Level Gooseneck  
No Cap



76

2 Rise Right Hand  
Level Gooseneck  
No Cap



81

2 Rise Left Hand  
Level Gooseneck  
with Cap



86

2 Rise Right Hand  
Level Gooseneck  
with Cap



89

2 Rise Straight  
Gooseneck with  
Tandem Cap



99

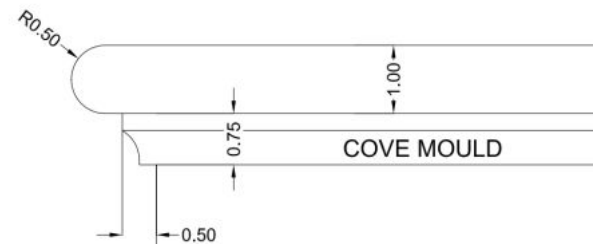
2 Rise Straight  
Gooseneck with  
No Cap

# TREADS



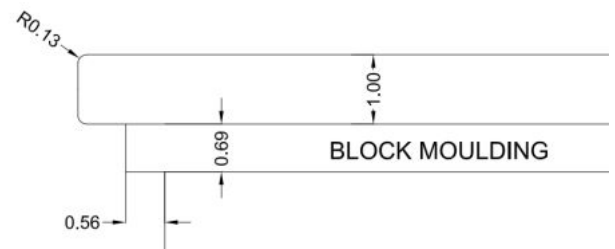
## 3300 Rounded

Standard 1" Treads  
 $\frac{3}{4}$ " x  $\frac{1}{2}$ " Cove Mould  
 $\frac{1}{2}$ " Round Over



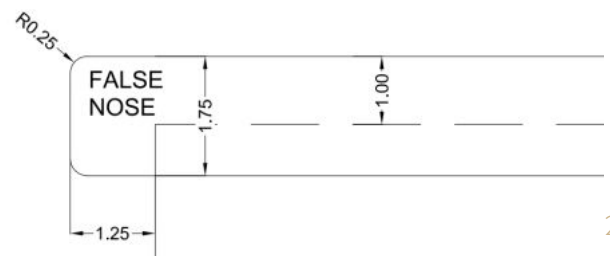
## 3301 Square

1" Square Nosed Treads  
 $\frac{11}{16}$ " x  $\frac{9}{16}$ " Trim  
 $\frac{1}{8}$ " Round Over



## 3F17 1.75" Faux Nose

1" Square Nosed Treads  
 with  $1\frac{3}{4}$ " False Nosing. No Trim.  
 $\frac{1}{4}$ " Round Over







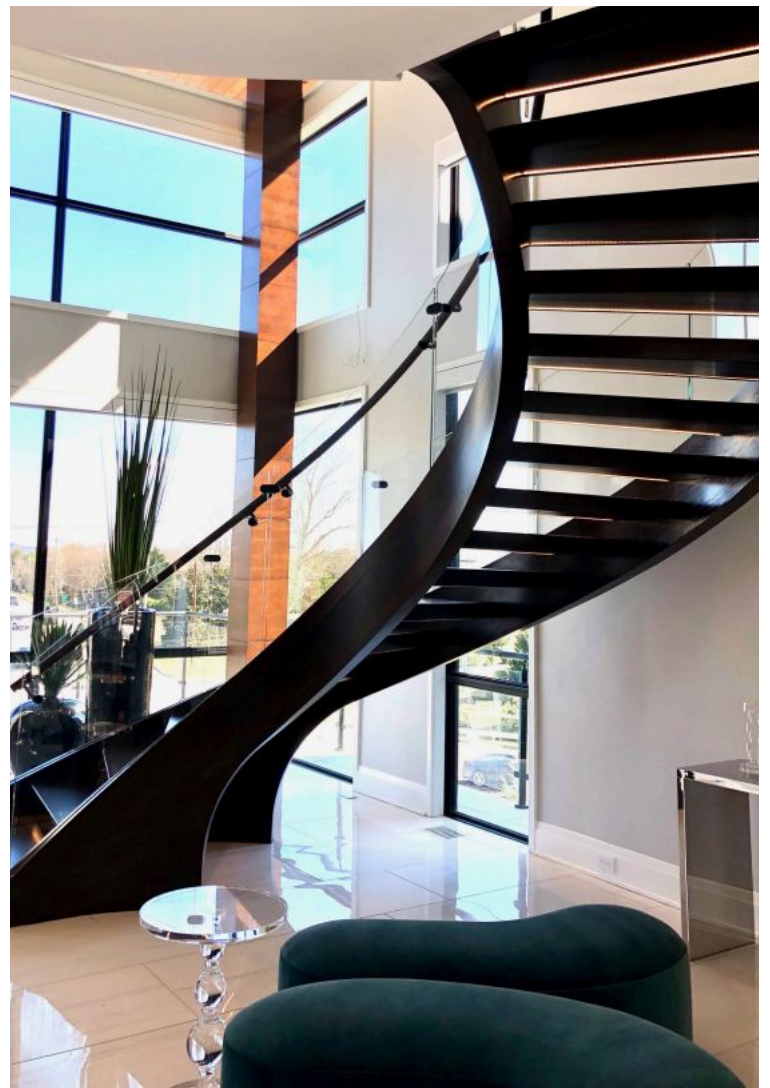
## SPECIALTY PRODUCTS



# GLASS



Clean and modern, glass railing systems are a unique option for clients seeking an eye-catching contemporary look for their residential or commercial space. Whether straight or curved, paired with wood or metal, our glass railing offers limitless design options and our team has the extensive capabilities to provide the highest quality glass handrail systems of all styles.



# STAINLESS STEEL

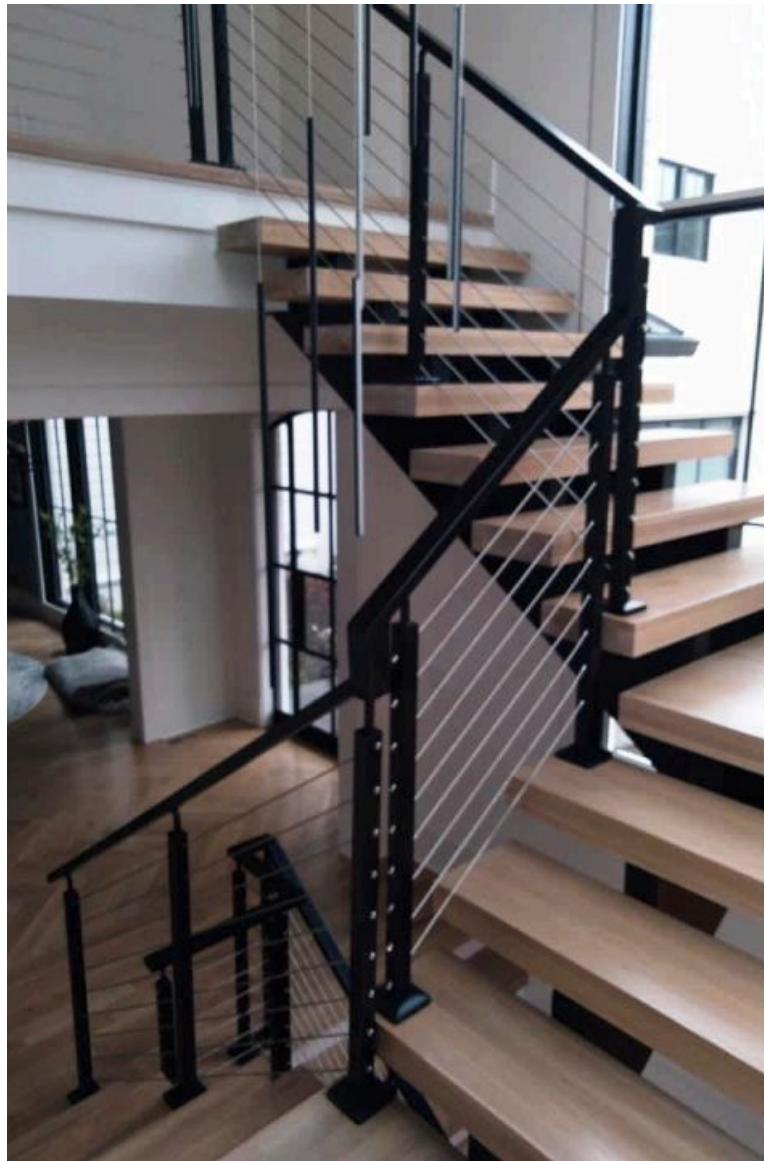
A stainless steel staircase lends a sense of modern sophistication and style to a commercial space or home. Both durable and aesthetically pleasing, our stainless steel staircases are available in limitless designs and styles, and our innovative team is capable of bringing your unique vision to life. We possess the experience, skill and capabilities to construct the highest quality stainless steel handrail systems.



# CABLE



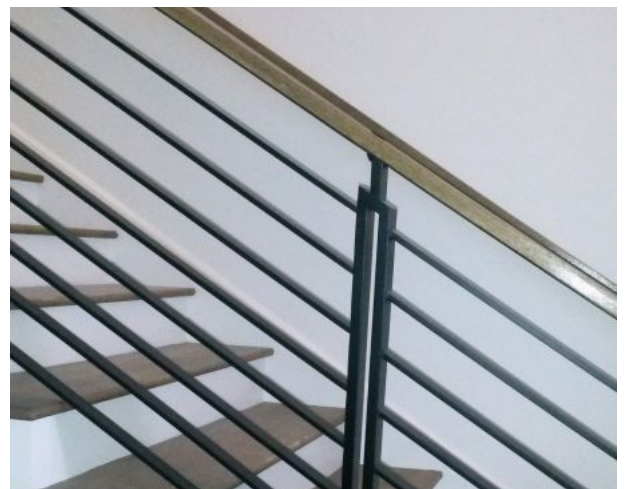
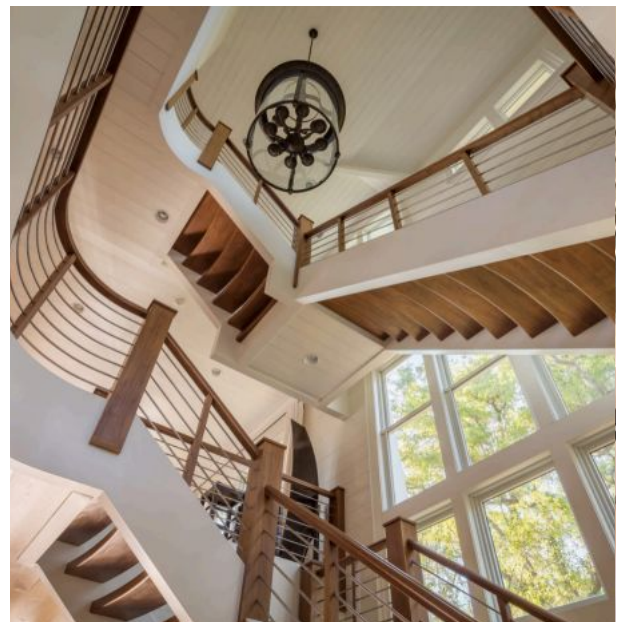
Cable railing systems offer a sleek, modern look that will enhance any staircase or balcony. With clean lines and outstanding durability, cable railing systems are an excellent choice for contemporary projects, both interior and exterior, residential and commercial. With extensive capabilities, we are dedicated to providing a seamless, cohesive design with a flawless fit and finish.



# HORIZONTAL BAR



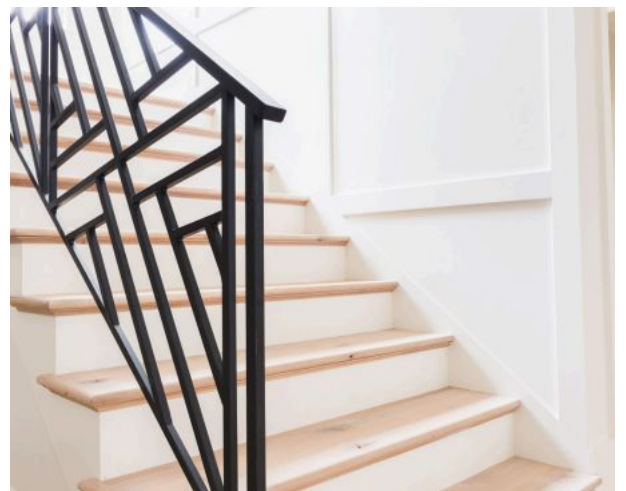
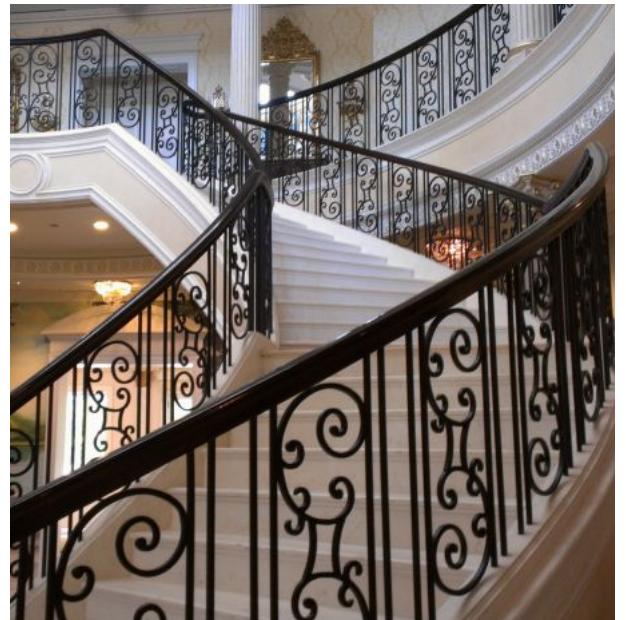
Clean lines and sleek elegance are combined in horizontal bar handrail systems. With a multitude of design options this type of handrail system can be used to complement a range of spaces and architectural styles. Choose between custom fabricated steel, stainless steel infill, or individual bars in a wood balustrade to bring your custom stair vision to life.



# ORNAMENTAL METAL



Make a statement. An ornamental metal handrail system speaks pure elegance. Southern Staircase has the skill and capability to deliver the highest quality hand forged iron handrail systems, delivering ultimate perfection to your desired space. From traditional to modern, curved to straight, our skilled craftsmen work closely with you to bring your vision to life.







|

Atlanta | Charlotte | Raleigh | Charleston | Greenville | Myrtle Beach | Columbia | Nashville | Lakeland